

Funds Distribution Report

Recipient Organization:

Camp Korey

Address:

24880 Brotherhood Rd, Box 1
Mount Vernon, WA 98274

Mailing Address:

18620 Main St, PO Box 806
Conway, WA 98238

Contact:

(360) 416-4120
<https://www.campkorey.org>

Organization's General Goals:

Camp Korey is named for Korey Rose, a vivacious teen who lost his battle with bone cancer at age eighteen. His father, Tim Rose, founded Camp Korey in 2005 with his family to honor Korey's memory and create a safe haven for other families dealing with childhood illness and serious medical conditions. Our mission is to honor the courage, strength and determination of children and their families living with life-altering medical conditions by providing them with a transformational experience in a fun, safe camp environment with specialized medical support.

Date of Award:

2022 Q2

Level:

\$2,501 to \$5,000

For more information, please read the attached report from Camp Korey.

8802 27th Ave NE
Tulalip, WA 98271

TulalipCares.org

Disclaimer: This report may be a summary of content provided by the recipient, not always complete quoted material.



CAMP KOREY 2022 REPORT
CODE: Q2 2021 14.2

Marilyn Sheldon, Director
Tulalip Tribes Charitable Contributions
8802 27th Ave NE
Tulalip, WA 98271-9694

February 17, 2023

Dear Mrs. Sheldon and Tulalip Tribes Charitable
Contributions Committee Members,



Thank you to Tulalip Tribes for your long-time support of Camp Korey! We greatly appreciate you and wanted to share the impact your generosity has had on hundreds of campers and families in our community.

Thanks to your support, **more than 1,600 children and family members living with life-altering illnesses experienced the transformative magic of Camp Korey in 2022** – 100% free of charge! Camp Korey’s adaptive activities and 24-hour medical care ensured that all children and families could participate in camp fun, try new things, make new friends, and build confidence and resilience. See the attached photo collage for fun moments of campers, siblings, and parents enjoying swimming, archery, and arts and crafts at camp from 2022.

2023 is already off to a great start. In January, Camp Korey hosted our first ever Caregiver’s Weekend, designed exclusively to support and connect caregivers of children living with life-altering illnesses. Recently, we hosted a Teen Retreat and soon we’ll welcome campers for our first 2023 Spring Family Weekend. We are also offering camper-only Residential Summer Camp this year for the first time since 2019. While camper families voiced their appreciation for the 2022 Family Summer Camp model that allowed families to attend camp together, many families shared that they missed Camp Korey’s traditional “camper-only” model, and that they hoped their child could experience camp independently. We are excited to once again offer this camp model for campers ready to attend Camp Korey on their own! More details on our 2023 programs can be found in the attached program schedules.

Thank you again for helping our campers and families find connection, respite, and fun at Camp Korey. Because of you, these families created unforgettable memories that will carry them through the tough times and remind them that they are never alone. If you have any further questions about camp, please feel free to contact me using the information below.

With gratitude,

Liz Theaker
Director of Development
ltheaker@campkorey.org
(360) 416-4120

“Camp Korey has given our daughter an experience of lifetime. The gift of empowerment and confidence to try and trust in herself will last her a very long time.” Camper Parent

425-440-0850 • CAMPKOREY.ORG

ADMINISTRATIVE MAILBOX
18620 Main Street
Box #806
Conway, WA 98238

CAMP ADDRESS
Camp Korey
24880 Brotherhood Rd Bldg A
Mount Vernon, WA 98274

Camp Korey: 2022 Highlights

Population Served

In 2022, **1,608 children and family members** living with life-altering illnesses found joy, laughter, and adventure at Camp Korey programs!

- The majority of Camp Korey families are from Washington state (94%), with the remaining 6% of camper families joining us from Colorado, Idaho, Montana, Oregon, and Pennsylvania.
- 13% of camper families reside in Snohomish County.
- 50% of our camper families identify as BIPOC (Black, Indigenous, and People of Color)
- Ages served: 7 and under (14%), 8-12 (37%), 13-15 (29%), 16+ (20%)

Programs:

Camp to You Hospital Outreach:

Your support helped bring the camp experience to kids in regional hospitals. Due to the COVID-19 pandemic and restrictions on visitors in hospitals, Camp Korey adapted our in-person Camp To You Hospital Outreach program to instead feature mailed packages and sanitized activity kits for pediatric patients. In 2022, Camp Korey provided **720** pediatric patients—including at Randall Children's Hospital in Portland, OR--with sanitized activity kits and care packages.

Camp Korey has been working closely with Seattle Children's Hospital, Mary Bridge Children's Hospital in Tacoma, WA, and Randall Children's to coordinate the return of in-person Camp to You.. We are excited to share that in-person programs with our hospital partners will start again in Spring 2023!

Family Day Adventures and Pop-Up Programs:

Fun-filled single day programs brought **406** children and family members together for events including:

- "West Coast, Best Coast!" Teen Meetup (Virtual)
- Mariners baseball at T-Mobile Park in Seattle, WA
- *Hamilton* at the Paramount Theatre in Seattle, WA
- Bellingham Bells baseball at Joe Martin Field in Bellingham, WA
- Spring Family Day at Camp Korey
- Sickle Cell Family Day with the Metropolitan Seattle Sickle Cell Task Force in Federal Way, WA



Family Weekends:

During 8 Family Weekends, **247** children and their family members spent 3 days and 2 nights together at camp. Each weekend was designed for families living with specific medical conditions, including Turner Syndrome, Craniofacial Differences, Differences in Sex Development, and Reconstructive Pelvic Medicine.

Summer Camp:

Eight sessions of Family Summer Camp served **235** kids and family members, who enjoyed a safe and socially-distanced week of fun! Activities included archery, adaptive cycling, horseback riding, swimming, arts & crafts, theater, s'mores and singing around the campfire, and lots of laughter with new friends.

Impact

Camp Korey measures the impact of our programs with a survey using tailored metrics from Yale University's Child Study Center and the SeriousFun Children's Network (SFCN). At the close of each program, campers and their families are asked to complete a 10-question survey to provide feedback regarding program outcomes and benefits. Camper/parent surveys are designed to measure the extent to which campers experienced positive impacts such as increased confidence, independence, and sense of belonging.

Camp Korey is proud to report that in 2022, over than 90% of camper families responded with "Agree" or "Strongly Agree" to the following statements:

"Camp Korey. . ."

- Made my child feel happier: 100%
- Helped my child feel less isolated: 94%
- Gave my child a sense of belonging: 100%
- Helped my child develop confidence: 94%
- Helped my child try new things: 100%
- Helped my child connect to others: 100%



The survey also includes multiple open-ended questions that invite detailed, personal accounts of our campers' experiences. Here are just a few of the testimonials Camp Korey received after 2022 camp programs:

"Thank you, Camp Korey, for giving my children a home away from home."

"It's more than just a camp, it's a way to be free!"

"A huge thank you to the entire staff, and all supporters of Camp Korey. The miracles that transpire because of this absolutely transform these kid's lives."

Construction

A highlight of 2022 was the official opening of four newly constructed buildings on Camp Korey's Mount Vernon campus. Our new 1400 square foot Indoor Recreation Center provides a designated space for campers to safely enjoy adaptive indoor activities like basketball and rock climbing. Three additional ADA accessible cabins ensure that Camp Korey can continue to increase the number of campers we serve while providing comfortable, accessible lodging.



We also expanded Harnish Hive, our 2-story campus dining hall. A wraparound outdoor deck was added to the main floor for expanded capacity and outdoor dining space. The lower-level Arts and Crafts center was expanded to include a

ceramics studio with a kiln for camper use, adding another activity for campers during onsite programs.

Welcome to our new Camp Director



Camp Korey welcomed a new Camp Director, Marty Dunning. Marty is responsible for program delivery at Camp Korey including all on-site and off-site camp programs. He supports and supervises the cabin life, program, volunteer, kitchen and Camp to You teams. Marty has a BA from the University of Kentucky in Psychology and is working on his MS in Organizational Leadership from Colorado State University-Global. Marty has been involved in SeriousFun Children's Network in various capacities since 2009 and has either worked or volunteered at every network camp in the US. Marty is a member of the Phi Kappa Tau Fraternity, whose national philanthropy is the SeriousFun Children's Network, and he volunteers in various capacities with the organization. Marty is also a volunteer in the American Camp Association as a visitor in its accreditation program, and holds certifications from both USA Archery and the Association for Challenge Course Technologies. Marty joined the team in July of 2022, and is excited to continue Camp Korey's commitment to intentional programs as well as ensuring campers have choice within their camp experience.

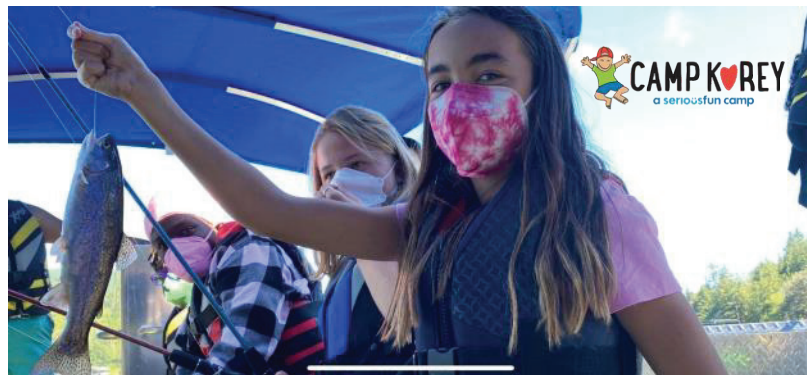


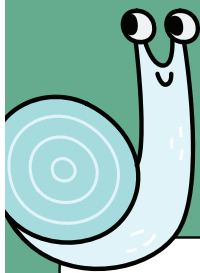
Thank you, Tulalip Tribes!



Thank you for enabling our campers and families
to experience joy, adventure, and friendship at Camp Korey!







CAMP KOREY'S SPRING INTO FUN



Camp Korey empowers children and families living with serious and life-altering medical conditions through year-round programming, **always free of charge.**

Family Weekend Programs are a chance to enjoy the energy and FUN of an adaptive, camp program designed with **YOUR** family in mind.

APPLY NOW!

Contact us at admissionsteam@campkorey.org or call Asha at **360-416-4113** for questions.



SPRING FAMILY WEEKEND GENERAL CONDITION



FEBRUARY 24-26

Friday arrival between 5-6 PM.
Sunday check-out around 11 AM.
Meals provided!

Registration is limited to 12 families per weekend.

SPRING FAMILY WEEKEND TURNER SYNDROME



MARCH 31 - APRIL 2

Friday arrival between 5-6 PM.
Sunday check-out around 11 AM.
Meals provided!

Registration is limited to 12 families per weekend.

SPRING FAMILY WEEKEND CONGENITAL HEART DEFECTS, SOLID ORGAN TRANSPLANT & BONE MARROW TRANSPLANT



MARCH 10-12

Friday arrival between 5-6 PM.
Sunday check-out around 11 AM.
Meals provided!

Registration is limited to 12 families per weekend.

SPRING FAMILY WEEKEND GENERAL CONDITION



APRIL 21-23

Friday arrival between 5-6 PM.
Sunday check-out around 11 AM.
Meals provided!

Registration is limited to 12 families per weekend.

SPRING FAMILY WEEKEND RECONSTRUCTIVE PELVIC MEDICINE



MARCH 24-26

Friday arrival between 5-6 PM.
Sunday check-out around 11 AM.
Meals provided!

Registration is limited to 12 families per weekend.



CAMP KOREY
a serious fun camp

425-440-0850 • campkorey.org • Mount Vernon, WA 98274



CAMP KOREY
a seriousfun camp

BRINGING **JOY**, **ADVENTURE**, AND **RESILIENCE** TO CHILDREN AND THEIR FAMILIES.

SUMMER CAMP SCHEDULE

Camp Korey is more than a camp, it's a place where children with serious medical conditions can just be kids. Totally Free of Charge.

Learn more about our annual programming at campkorey.org or scan the QR Code with your smart phone camera to watch a video and hear directly from families about their camp experiences.



CAMPER + FAMILY SESSIONS

July 25-29
General Conditions

Aug 13-17
General Conditions



CAMPER + BLOCK SESSIONS

July 2-6
Turner Syndrome + Craniofacial Conditions + General

July 9-13
Neurologic Conditions + Metabolic and Genetic Disorders

July 16-20
Skeletal Dysplasia + Metabolic Bone Disorders

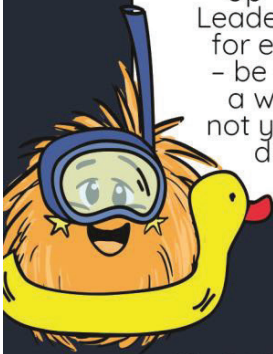
Questions?
Call Asha at (360) 416-4113 or email admissionsteam@campkorey.org

*Up to 4 BLOCK Leaders can apply for each session - be sure to pick a week that is not your primary diagnosis.

July 23-27
Solid Organ Transplant + Congenital Heart Defects + General

July 30-Aug 3
Reconstructive Pelvic Medicine + Differences in Sex Development + General

Aug 6-10
Sickle Cell + Blood Disorders + Bone Marrow Transplant



★ **CAMP KOREY | 24880 BROTHERHOOD RD. MOUNT VERNON, WA 98274 | TAX ID 20-3829742** ★