

# Funds Distribution Report

**Recipient Organization:**  
**Ghostlight Performing Arts**

**Contact:**  
(253) 225-7372  
<https://www.ghostlightpa.com>

**Organization's General Goals:**

The mission of Ghostlight Performing Arts is to channel community passion for live performance, uplift community performers, and create new opportunities for artistic expression, particularly life theater.

<b>Date of Award:</b>	<b>Level:</b>
2025 Q2	\$500 to \$2,500

For more information, please read the attached report from Ghostlight Performing Arts.

8802 27th Ave NE  
Tulalip, WA 98271  
**TulalipCares.org**

Disclaimer: This report may be a summary of content provided by the recipient, not always complete quoted material.

---

**From:** Ghostlight Performing Arts <theater@ghostlightpa.com>

**Sent:** Friday, January 9, 2026 1:26 PM

**To:** Marilyn Sheldon <msheldon@tulaliptribes-nsn.gov>

**Subject:** Charity Report Q2 2025 14.2

Dear Tulalip Cares,

Because of your generous donation we had a phenomenal run of our Christmas production of Dickens "A Christmas Carol." We were able to upgrade our lighting and purchase period-appropriate costumes and props. We received rave reviews from our audiences. We produced 7 performances. We sold 275 tickets total in a venue that seats up to 80 people. The first performance was a mere 18 audience members. The audiences grew with each performance. Our last two performances were at capacity with 80 audience members each! The word of mouth from the audiences on social media was instrumental in ticket sales. But the number one thing the audiences loved the most was the period costumes and props we purchased. The venue is tiny; the stage is a mere 13'x9' but with costumes and props, we gave the illusion of it being much bigger.

We had a budget of \$1,500 and we made \$5,000! We are outgrowing this venue that we have used for the last year on Fox Island. We are in talks with a local church, which has a much bigger space, to produce shows there. Eventually, we would like our own building in Gig Harbor proper and are working towards that goal. Your contribution is helping make that dream come true!

Thank You so much! We are elated that we are growing and that you are helping in that endeavor. Below are links to our website and the performance picture gallery.

Rex Davison



Rex Davison, President  
Ghostlight Performing Arts  
501(c)3 Non-Profit  
EIN 84-3842266

theater@ghostlightpa.com  
253.225.7372  
www.ghostlightpa.com



[Ghostlight Performing Arts](https://www.ghostlightpa.com)  
[ghostlightpa.com](https://www.ghostlightpa.com)

Picture gallery of our performances at <https://www.ghostlightpa.com/scrooge-2025>



# A CHRISTMAS CAROL

## CAST & CREW



### Scott Brinkley

Scott grew up in the stage, his father took him to the theatre, and he says that the stage was his first love. He has been in theatre since he was 10, and he has been in theatre since he was 10. He has been in theatre since he was 10, and he has been in theatre since he was 10.



### Ben Whittington

Ben started in the acting world when he was 10, and he has been in theatre since he was 10. He has been in theatre since he was 10, and he has been in theatre since he was 10. He has been in theatre since he was 10, and he has been in theatre since he was 10.



### Emily Ryley

Emily has been in theatre since she was 10, and she has been in theatre since she was 10. She has been in theatre since she was 10, and she has been in theatre since she was 10. She has been in theatre since she was 10, and she has been in theatre since she was 10.



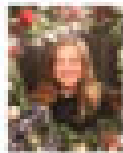
### Catherine Goodland

Catherine has been in theatre since she was 10, and she has been in theatre since she was 10. She has been in theatre since she was 10, and she has been in theatre since she was 10. She has been in theatre since she was 10, and she has been in theatre since she was 10.



### Ben Ryley

Ben has been in theatre since he was 10, and he has been in theatre since he was 10. He has been in theatre since he was 10, and he has been in theatre since he was 10. He has been in theatre since he was 10, and he has been in theatre since he was 10.



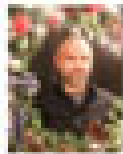
### Rachel McElwaine

Rachel has been in theatre since she was 10, and she has been in theatre since she was 10. She has been in theatre since she was 10, and she has been in theatre since she was 10. She has been in theatre since she was 10, and she has been in theatre since she was 10.



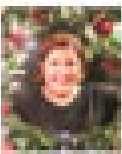
### Rachel Ryley

Rachel has been in theatre since she was 10, and she has been in theatre since she was 10. She has been in theatre since she was 10, and she has been in theatre since she was 10. She has been in theatre since she was 10, and she has been in theatre since she was 10.



### Ben Whittington

Ben has been in theatre since he was 10, and he has been in theatre since he was 10. He has been in theatre since he was 10, and he has been in theatre since he was 10. He has been in theatre since he was 10, and he has been in theatre since he was 10.



### Catherine Goodland

Catherine has been in theatre since she was 10, and she has been in theatre since she was 10. She has been in theatre since she was 10, and she has been in theatre since she was 10. She has been in theatre since she was 10, and she has been in theatre since she was 10.



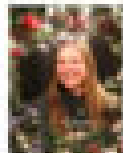
### Ben Whittington

Ben has been in theatre since he was 10, and he has been in theatre since he was 10. He has been in theatre since he was 10, and he has been in theatre since he was 10. He has been in theatre since he was 10, and he has been in theatre since he was 10.



### Catherine Goodland

Catherine has been in theatre since she was 10, and she has been in theatre since she was 10. She has been in theatre since she was 10, and she has been in theatre since she was 10. She has been in theatre since she was 10, and she has been in theatre since she was 10.



### Rachel Ryley

Rachel has been in theatre since she was 10, and she has been in theatre since she was 10. She has been in theatre since she was 10, and she has been in theatre since she was 10. She has been in theatre since she was 10, and she has been in theatre since she was 10.

## Ghostlight Kids After-School Theater Program



Hosted by Ghostlight Performing Arts  
Directed by Robyn McGilvrey

Ghostlight Performing Arts, Gig Harbor's only community theater, would like to offer after-school theater classes to your students. Discover the magic of theater while building creativity, confidence, and teamwork from inside your own school!

Here's how it works:

3 sessions per school year at your school.  
6 weeks per session.  
2 classes per week.  
2 hours per class.

Ghostlight would like the opportunity to coordinate with your school's parent's organization to sign up kids for our program.

If you are interested, please contact us: [theater@ghostlightpa.com](mailto:theater@ghostlightpa.com) or call Robyn McGilvrey at (253) 225-6485.

Bree Kalmon  
Photography



Grantor



## Sponsors

Rex Davison / Realtor

COMPASS  
Real Estate



THE  
WATSON  
GROUP



Exclusive Realtors of  
the Seattle Seahawks



ghostlight  
PERFORMING ARTS  
PRESENTS

CHARLES DICKENS

# A CHRISTMAS CAROL

Adapted & Co-Directed by  
Rex Davison & Robyn McGilvrey

## PERFORMANCE DATES

DEC 5-7/12/14/19/21

NICHOLS COMMUNITY CENTER

WWW.GHOSTLIGHTPA.COM

# CAST

IN ORDER OF APPEARANCE

## RILEY CORY

Tiny Tim (narrator) / Fan / Ignorance Child

## DEVIN O'NEILL

Ebenezer Scrooge

## REX CORY

Bob Cratchet / Old Joe / Gentleman

## SKYLAR WOLFE

Fred Hollowell / Belle / Christmas Future

## JESSYE ALFRED

Charity Woman / Christmas Past / Mrs. Cratchet / Mrs. Dilber

## ALASTAIR O'NEILL

caroler / Young Scrooge / Peter Cratchet / Want Child / Turkey Boy

## ROB MCGILVREY

Marley / Mr. Fezziwig / Gentleman #2 / Mr. Tackleton / Poulterer

## BOBBI WEATHERHOLT

Christmas Present

## ROBYN MCGILVREY

Martha Cratchet / Janet Hollowell / Mrs. Oliver

## CREW

### JOE MCGILVREY

Lighting & Sound

### KELSEY CORY

Back Stage

### REX DAVISON

Director / Set Design / Gentleman

## ACT 1

ACCOUNTING HOUSE

MARLEY

CHRISTMAS PAST

CHRISTMAS PRESENT

## ACT 2

CHRISTMAS PRESENT CONTINUED

CHRISTMAS FUTURE

CHRISTMAS MORNING

ACCOUNTING HOUSE

A Special Thank You  
to FICRA for hosting  
Ghostlight



**DONATE**



 [www.ghostlightpa.com](http://www.ghostlightpa.com)