



**CHARITABLE  
CONTRIBUTIONS**

8802 27th Ave NE  
Tulalip, WA 98271

**TulalipCares.org**

# Funds Distribution Report

---

**Recipient Organization:**  
**Island Shakespeare Festival**

**Physical Address:**  
5476 Maxwellton Rd  
Langley, WA 98260

**Mailing Address:**  
PO Box 1262  
Langley, WA 98260

**Contact:**  
(360) 331-2939  
<https://islandshakespearefest.org>

## **Organization's General Goals:**

Our mission is to provide accessible, classical theatre realized for a contemporary audience. By providing accessible classical productions in innovative and compelling ways, we intend to ignite the power of theatre to illuminate, inspire, and foster our ability to live, locally and globally, in connection with each other.

---

<b>Date of Award:</b>	<b>Level:</b>
2019 Q4	\$500 to \$2,500

## **Specific Use for This Award:**

For more information, please read the attached report from Island Shakespeare Festival.

Disclaimer: This report may be a summary of content provided by the recipient, not always complete quoted material.

To whom it may concern,

I represent Island Shakespeare Festival, EIN 46-3267929., and we were very lucky to receive a grant from you back in March of 2020, for our upcoming summer season. Unfortunately, due to the Covid pandemic we had to postpone our season until 2021.

When the national shut-down began, we felt the best way to weather this time would be to step back, make masks, improve our infrastructure and organizational culture, and look forward to the time we can create live theatre again. Then members of our community started to reach out and ask if we had anything planned, saying they really were going to miss seeing our work this year.

We were reminded of our fervent commitment to our mission and to our artists. So what to do? We invited our 2020 directorial team to inspire us. The parameters: pitch a digital idea somehow related to Shakespeare, and something more playful than a zoom reading.

We know digital theatrical programming will be an important way to stay engaged with our audience and artists even when live in-person events are safe again. Your grant helped to realize that programming and to create our inaugural Shakespeare Playground Season. Our first weekend showed that it was viewed by 100 unique viewers over multiple platforms. We will have these episodes on our website, with closed captioning, in order to reach even more members of our community into the future. You can find more information about that at <https://www.islandshakespearefest.org/OurWork/Shakespeare-Playground.html>

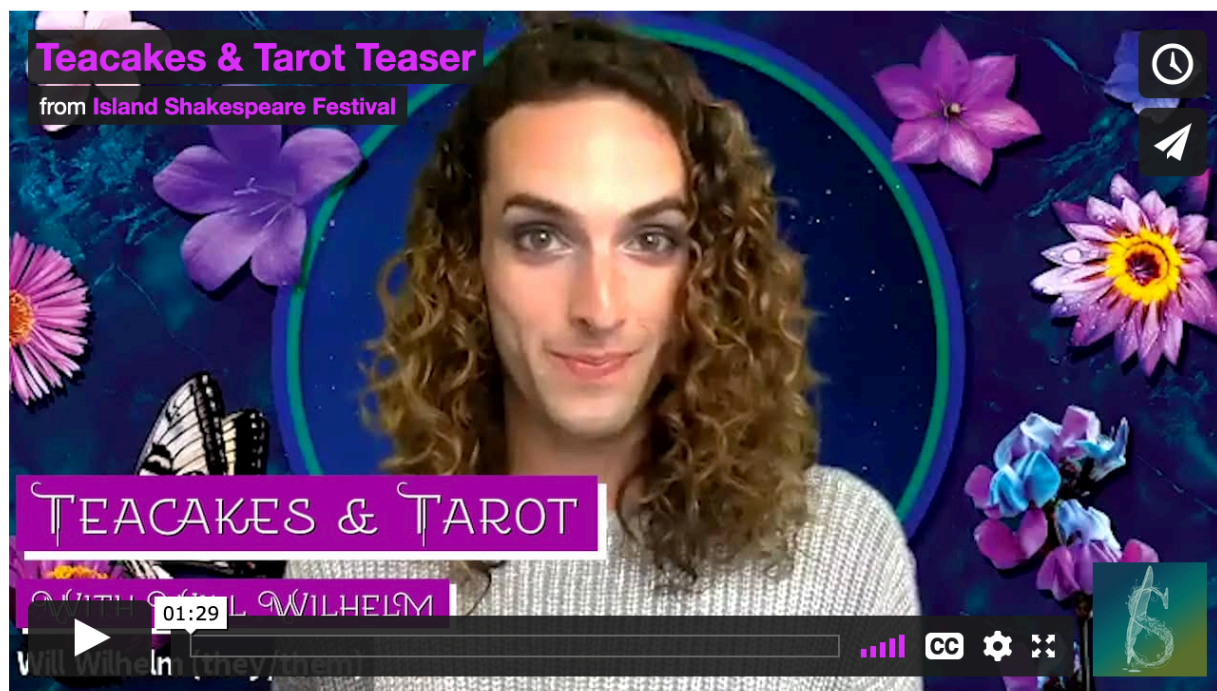
I am also attaching a screenshot of our promo video for the "opening" of this event, for your records.

Please let me know if you have any further questions or needs from me at this time. Thank you again for your generous support of Island Shakespeare Festival

**Michelle M. Durr | Managing Director**  
(she/her/hers--[What's this?](#))

## ▼ Teacakes & Tarot

Join us as we investigate the intersections of Tarot, gender, and Shakespeare's canon. Theatre-maker Will Wilhelm (they/them) will lead bite-sized interactive live-streamed Zoom sessions that will entertain, inspire, and enlighten! Developed by Erin Murray (she/her) and Will Wilhelm as part of a solo-show collaboration process.



Created by [Will Wilhelm](#) (they/them) and [Erin Murray](#) (she/her)

"Scenic" Design by [Kathryn Lynn Morgen](#) (they/them)

### OCTOBER LINEUP:

Wednesday, October 21: [Ada Karamanyan](#) (she/her) [Reserve Free "Tickets"](#)

Thursday, October 22: [Christian Bufford](#) (he/they) [Reserve Free "Tickets"](#)

Friday, October 23: [Linnea Valdivia](#) (she/her) [Reserve Free "Tickets"](#)

### NOVEMBER LINEUP:

Wednesday, November 11: [Sara Bruner](#) (she/her) [Reserve Free "Tickets"](#)

Thursday, November 12: [MJ Kaufman](#) (they/them) [Reserve Free "Tickets"](#)

Friday, November 13: [Meme García](#) (they/them) [Reserve Free "Tickets"](#)

### SEPTEMBER Archive

[Kevin Kantor](#) (they/them) [View the video](#)

[Jordan Barbour](#) (he/him) [View the video](#)

[Lucky Stiff](#) (they/them) [View the video](#)