



Funds Distribution Report

Recipient Organization:
Pacific Science Center Foundation

Address:
200 Second Ave N
Seattle, WA 98109

Contact:
(206) 443-2001
<https://www.pacificsciencecenter.org>

Organization's General Goals:
Science is for everyone, we believe that curiosity and critical thinking are essential to equity and justice for all. We embrace science as a process of inquiry, discovery, and problem solving that helps us better understand our universe and each other. Science has the power to connect people and to develop solutions for the common good.

Date of Award:	Level:
2019 Q2	\$2,501 to \$5,000

For more information, please read the attached report from Pacific Science Center Foundation.

8802 27th Ave NE
Tulalip, WA 98271

TulalipCares.org

Disclaimer: This report may be a summary of content provided by the recipient, not always complete quoted material.

ACCESS TO SCIENCE PIPELINE

PacSci is committed to expanding access to science and STEM learning for all. The Access to Science Pipeline removes economic barriers and strengthens science education statewide, especially for families and schools with limited resources. Multiple entry points from pre-k through 12th grade open doors and for all kids, in Seattle and beyond.

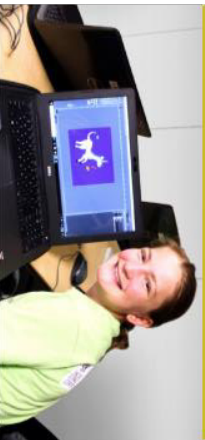
Access Memberships



Family Access Memberships provide a full membership for just \$19 per year to anyone receiving public assistance. Youth Access Memberships provide the same benefit at no cost to foster youth, youth experiencing homelessness, and their care providers.

3,924 families were active Access Members on June 30, 2020.

Camp Scholarships



More than 3,700 youth in Prek-8th grade participate in Pacific Science Center's week-long science camps each summer at four locations throughout Puget Sound and virtually. Need-based scholarships at every location cover 100% of camp fees, early drop off, lunch, and late pick up. We work with service agencies and community organizations to inform families about camp scholarships.

184 youth received full scholarships during Summer 2020.

Outreach & School Programs



PacSci makes hands-on science education available to students and serves as a vital resource for educators statewide. We serve high-need, Title I schools through subsidized field trips, Science On Wheels classroom visits, and summer STEM programming.

- 11,575 students and chaperones visited PacSci on school field trips during the 2019-20 school year, including 2,678 from Title I schools with financial assistance from PacSci
- Science On Wheels served 64,972 students statewide during the 2019-20 school year, including 35,765 students in Title I schools.
- 520 youth participated in free live virtual community-based STEM programming during Summer 2020.

High School Programs



PacSci offers high school students valuable scientific skill development, on-the-job training, and a launch pad to college through innovative programs like Discovery Corps and Washington Watershed Internships. Both programs place a particular emphasis on opening doors for young women, racial and ethnic minorities, and low-income students.

- 71 high school students were Discovery Corps members during the 2019-20 school year. 63% of these students are female, 87% are people of color, and 44% are low income.
- 33 high school students were Lake Washington Watershed Interns during the 2019-20 school year. 66% of these students are female, 81% are people of color, and 60% speak a language other than English at home.