



# Funds Distribution Report

---

**Recipient Organization:**  
**Pacific Treatment Alternatives**

**Address:**  
1721 Hewitt Ave, Suite 200  
Everett, WA 98201

**Contact:**  
(425) 259-7142  
<https://pactrt.org>

**Organization's General Goals:**  
Pacific Treatment Alternatives serves Snohomish County by providing wrap-around social services to at-risk community members addicted to drugs and alcohol with a focused purpose to reduce harm to our community and create safe pathways for suffering individuals to find healthy solutions to their problems and stop the cycle of abuse. We aspire to give our clients and community hope for a better future.

---

<b>Date of Award:</b>	<b>Level:</b>
2019 Q1	\$7,501 to \$10,000

For more information, please read the attached report from Pacific Treatment Alternatives.

8802 27th Ave NE  
Tulalip, WA 98271

**TulipCares.org**

Disclaimer: This report may be a summary of content provided by the recipient, not always complete quoted material.

Pacific Treatment Alternatives  
**Emergency Shelter Services to Educate and Empower  
Mothers (ESTEEM)**

---

Tulalip Tribes Charitable Contribution

**Q1 2019 14.2**

Project funding timeline: September 2019 – February 2020  
1721 Hewitt Ave Ste 200  
Everett, WA 98201  
P: 425-259-7142 Ext 207  
F: 425-317-0105  
[debbie@pactrt.org](mailto:debbie@pactrt.org)

# PACIFIC TREATMENT ALTERNATIVES

---

HELPING PEOPLE HAVE A BRIGHTER FUTURE

## ***Emergency Shelter Services to Empower and Educate Mothers (ESTEEM)***

Total overall number of recipients impacted by Pacific Treatment Alternatives/Parent-Child Assistance Program (PTA/PCAP) in 2019; **181 families**.

With the Grant Award funding for Pacific Treatment Alternatives (PTA) newest program: Emergency Shelter Services to Empower and Educate Mothers (ESTEEM), PTA has been able to help these families in a new and more tangible way with the current housing deficit in Snohomish County. The generosity of Tulalip Tribes and United Way of Snohomish County funding have made it possible to rent a three-bedroom house from September 2019 through December 2020. The startup funding provided rent, utilities and PTA was able to fully furnish the home and provide basic essential needs for these women and children during their 20-90 day stay.

The ESTEEM shelter program located and rented a property in Mid-September and officially opened its doors on November 4<sup>th</sup>, 2019. The property is in South Everett, close to daycares, medical services, groceries stores and on the bus line in order for these families to access additional resources. Additionally, these women and children have a direct line to PTA's main campus offices where clients can access their case manager, educational groups, women's resource center, interactive parenting courses, and support as to grow in their recovery.

Since the shelter has been in operation, eight homeless mothers have been housed and are off the streets with their children. Children ages have ranged from newborn to three years old. Two of those women have moved to permanent stable housing. Deep gratitude for the opportunity to have a warm and safe environment for their family during the transition was expressed. The family room has been made available as a fourth bedroom; this housed another family in the shelter, maximizing the impact of the ESTEEM shelter.

The ESTEEM shelter, to date, has contributed in the fight against chronic homelessness by making available 373 shelter bed nights for women and children in desperate need in Snohomish County. PTA looks forward to continuing efforts to make this shelter a permanent fixture and program in Snohomish County.

As PTA looks forward, we need to address the labor costs for the ESTEEM shelter in order to better serve these families. When requesting funding previously, PTA originally planned to absorb the labor costs within the current funding stream for case management. PTA has found a .SFTE housing supervisor is needed to oversee the interviews, intake/exit process, weekly house meetings, daily operations, inventory, policy and procedures and HMIS data requirements for the county.

Thank you,  
Debbie Graham, MSW  
Executive Director, Pacific Treatment Alternatives

---

CASE MANAGEMENT, COORDINATION WITH COMMUNITY RESOURCES, WORKSHOPS, ON-SITE THERAPEUTIC  
CHILDCARE, HOUSING AND EMPLOYMENT ASSISTANCE, EMERGENCY SHELTER SERVICES (ESTEEM)

---

1721 HEWITT AVENUE, STE 200, EVERETT WA 98201-3582

Phone: 425-259-7142 Fax: 425-317-0105

Please visit our web site at [www.pactrt.org](http://www.pactrt.org)



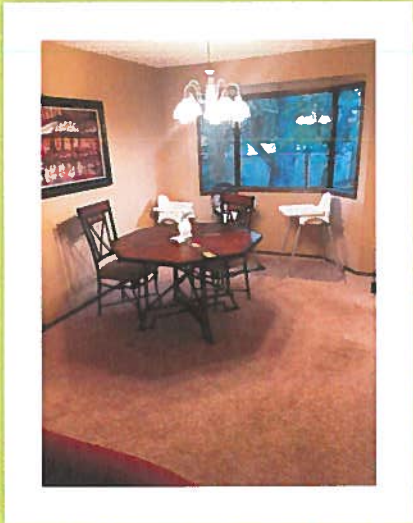


## KITCHEN WITH TWO REFRIGERATORS

Each family has a designated shelf or cupboard space, space in a frig.

We also have house food available based on donations that we bring in from local food banks.

Communication Board of groups and activities, resources for recovery, chores, and house emergency information.



## LIVING SPACE FOR COMMUNITY

Plenty of lounging places, reading nook and dining room for social time, house meetings and movie night.

Full catalog of family friendly movies and educational programs



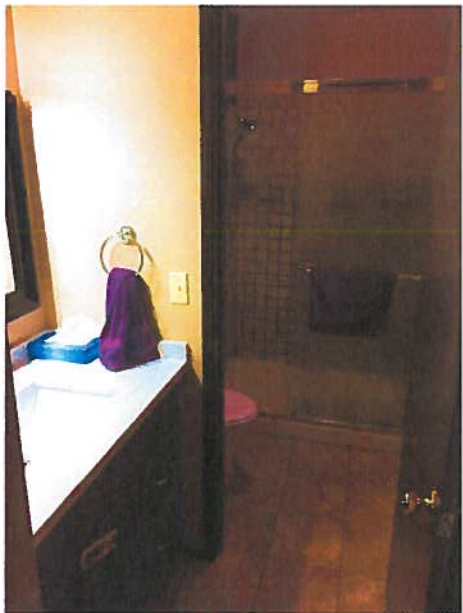
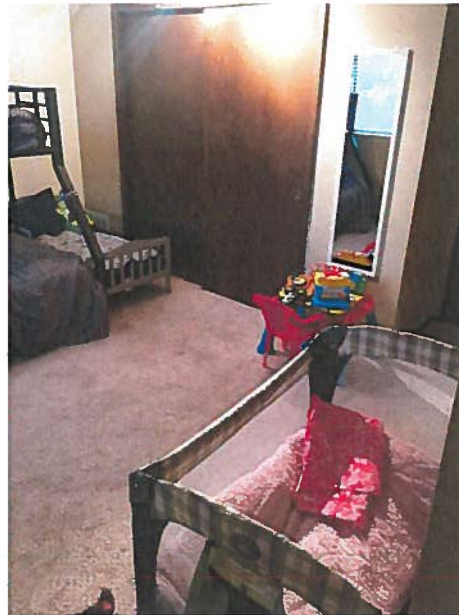
## **BUSINESS CENTER, KIDS ZONE AND 4<sup>TH</sup> BEDROOM**

Basement is a bonus room for kids play area with toys and activity table.

Business center area with WiFi and resource binder.

The larger space can be made into a bedroom to house an extra family. We move bed in and out based on need.





## **UPSTAIRS BEDROOMS AND 3/4 BATH**

Butterfly master bedroom can serve 2-3 single women or mother with 3-4 kids

Firefly bedroom can serve 1 single or pregnant mom or a mother with 1-2 kids



**UPSTAIRS BEDROOMS, FULL BATH & LAUNDRY ROOM WITH 1/2 BATH**

Ladybug bedroom can serve 1-2 single or pregnant women or a mother with 2-3 kids

Hall bathroom has full bath and sink area with plenty of storage and hall closets to share



**Pacific Treatment Alternatives**  
**1. Financials - Tulalip - Shelter**  
September 2019 through February 2020

---

Sep '19 - Feb 20

Ordinary Income/Expense	
Income	
Grants	
Tulalip	
Total Grants	
Total Income	
Gross Profit	
Expense	
Broker Fees	
Equipment	
Rent	
Shelter	
Total Rent	
Supplies	
Shelter	
Total Supplies	
Travel and Meals	
Meals	
Travel	
Total Travel and Meals	
Total Expense	
Net Ordinary Income	
Net Income	

