



# Funds Distribution Report

---

**Recipient Organization:**  
**Seattle Art Museum**

**Address:**  
1300 First Avenue  
Seattle, WA 98101

**Contact:**  
(206) 654-3100  
<http://seattleartmuseum.org>

**Organization's General Goals:**

SAM connects art to life. Through art, the Seattle Art Museum fosters creativity and builds community. As a leading visual art institution in three unique locations, SAM shares its global collections, powerful exhibitions, and dynamic programs to engage, educate, and inspire.

---

<b>Date of Award:</b>	<b>Level:</b>
2017 Q3	\$2,501 to \$5,000

**Specific Use for This Award:**

This award was used for administrative and program expenses. For more information see the following report by Seattle Art Museum.



# Double Exposure

**Grant Impact Report to the Tulalip Tribes**

**Q3 2017 14.2**

**[www.seattleartmuseum.org](http://www.seattleartmuseum.org)**



# Double Exposure: Edward S. Curtis, Marianne Nicolson, Tracy Rector, Will Wilson

Seattle Art Museum

We are deeply grateful for the support from the Tulalip Tribes Charitable Contributions for *Double Exposure: Edward S. Curtis, Marianne Nicolson, Tracy Rector, Will Wilson*. This exhibition placed Edward S. Curtis's photographic perspective of early-20th century Native cultures in conversation with the work of Nicolson, Rector, and Wilson, contemporary artists of Indigenous heritage. Your generous funding made it possible to share the perspectives of these contemporary artists with the greater Seattle community, encouraging people of diverse backgrounds to consider a more nuanced vision of Native America and Indigenous identity.

The exhibition was tremendously popular and received high praise from a variety of art critics and news outlets. The exhibition **attracted more than 93,000 visitors**, exceeding our attendance expectations (**124% of attendance projection**). During a time when access to arts education is lacking in schools, your gift allowed SAM to engage new audiences through a dynamic lineup of free or deeply discounted public programming inspired by *Double Exposure*. Daily docent tours, as well as educational programs, engaged large audiences in questioning the historical representation of Native people and learning about contemporary Native cultures.

Throughout the process of creating the exhibition, SAM worked closely with an Advisory Committee of artists and community members with diverse Native affiliations. Before the exhibition opened to the public, SAM held an Indigenous People's Opening, free for individuals with tribal affiliations, in appreciation of the many living Indigenous people in the Pacific Northwest. A separate Community Opening Celebration, free to the general public, included performances and a Native Art Market showcasing contemporary Indigenous artists. Additional special programming included workshops and film screenings hosted by the featured artists, and a Summer Institute for Educators that further delved into the exhibition. Summer at SAM, the museum's annual summer programming at the Olympic Sculpture Park, centered on Native and Indigenous artists and voices and provided an additional platform to explore themes presented in the exhibition.

Programming highlights, attendance, photos, and selected press follow. Please contact Institutional Giving Officer Erika Nelsen at [erikan@seattleartmuseum.org](mailto:erikan@seattleartmuseum.org) or 206-332-1359 for additional information.

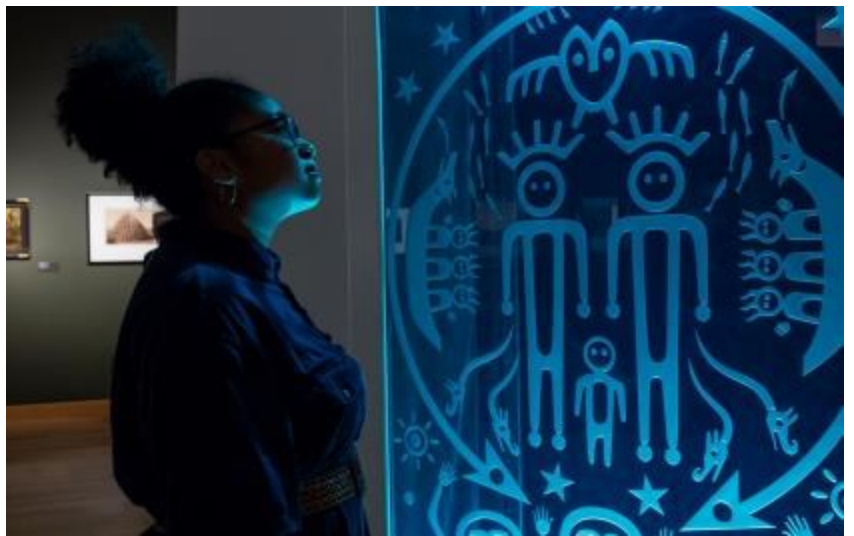
# Programs and Attendance

<b>Attendance</b>	<b>Visitors</b>
Total	93,100
Days Open	75
Avg. Daily Attendance	1,241
Public Tours	3,182
Private Tours	429
K-12 Camp Tours	562
<b>Opening Events</b>	
Press Preview	60
Member Preview	1,918
Premier Members Reception	638
Contributors Circles Reception	285
Indigenous People Opening Night	200
Community Opening Celebration	1,000
<b>Selected Programming</b>	
Double Exposure Artists in Conversation Thursday, June 14	300
Summer Institute for Educators Wednesday, August 1 - Friday, August 3	50
SAM Remix Friday, August 24	2,400
Drop-In Studio: Art Exposure Every Sunday	444
My Favorite Things Tours: Double Exposure Most Fridays and Saturdays	453
Summer at SAM Thursday and Fridays in July and August	15,000

# Photos



# Photos



# Selected Press Coverage A-Z

AFAR, "10 Brilliant U.S. Art Exhibitions Worth Traveling for this Summer," <https://www.afar.com/magazine/10-brilliant-us-art-exhibitions-worth-traveling-for-this-summer>

Art & Object, "'Double Exposure' Brings Native American Self-Representation to the Forefront," <https://www.artandobject.com/shorts/double-exposure-brings-native-american-self-representation-forefront>

ArtBeat Northwest with Pat Pauley, "Double Exposure Exhibit at SAM," <https://1150kknw.com/archives/artbeat-northwest/>

CityArts, "'Double Exposure: A Reckoning with Edward S. Curtis,'" <https://www.cityartsmagazine.com/double-exposure-a-reckoning-with-edward-s-curtis/>

Crosscut, "Artist RYAN! Feddersen flips the script on Native American stereotypes," <https://crosscut.com/2018/07/ryan-feddersen-flips-script-native-american-stereotypes>

Crosscut, "Viewing Edward Curtis photos through today's lens," <https://crosscut.com/2018/06/viewing-edward-curtis-photos-through-todays-lens>

**"These added perspectives emphasize that Native Americans are contemporary Americans. They continue to adapt while preserving a long legacy of strength and struggle." - Crosscut**

GeekWire, "More than paint on a wall: Hands-on with VR and AR in art museums from Chicago to Seattle," <https://www.geekwire.com/2018/paint-wall-hands-vr-ar-art-museums-chicago-seattle/>

Global Traveler, "Double Exposure in Seattle," <http://www.globaltravelerusa.com/double-exposure-in-seattle/>

Huck Magazine, "A visual celebration of Native American culture," <http://www.huckmagazine.com/art-and-culture/photography-2/visual-celebration-native-american-culture/>

**"The work of these artists stands in sharp juxtaposition to the elegant Curtis photographs with their romanticized approach that casts Native people in the past," Brotherton concludes. "Native people did not vanish. They are resilient and deeply engaged in the issues of identity today." - Huck Magazine**

Indian Country Today, "Double Exposure exhibit opens at Seattle Art Museum," <https://newsmaven.io/indiancountrytoday/the-press-pool/double-exposure-exhibit-opens-at-seattle-art-museum-A8Q-WnegqUK0yLac7op-BA/>

King 5 News, "Seattle Art Museum explores Native American identity through historic and modern photography," <https://www.king5.com/article/entertainment/television/programs/evening/seattle-art-museum-explores-native-american-identity-through-historic-and-modern-photography/281-563828533>

La Conner Weekly News, "Looking through the long lens of time," <http://laconnerweeklynews.com/main.asp?SectionID=2&SubSectionID=27&ArticleID=1880&TM=9655.024>

The New York Times, "A Canadian Museum Promotes Indigenous Art. But Don't Call it 'Indian.'" <https://www.nytimes.com/2018/07/13/arts/design/art-gallery-of-ontario-indigenous-art.html>

Peninsula Daily News, "Seattle Art Museum exhibit's displays include images of Peninsula," <http://www.peninsuladailynews.com/news/seattle-art-museum-exhibits-displays-include-images-of-peninsula/>

# Selected Press Coverage A-Z

Real Change, "Seattle Art Museum showcases Native artists and shines a critical light on the legacy of photographer Edward S. Curtis," <http://realchangenews.org/2018/07/11/seattle-art-museum-showcases-native-artists-and-shines-critical-light-legacy-photographer>

**"Displaying Curtis' work alongside contemporary Native artists is part of a growing shift among art institutions, which are becoming more critical of themselves and inviting visitors to do the same. They are becoming more conscious of who is telling the narrative."** - Real Change

Real Change, "Double Exposure: Edward S. Curtis, Marianne Nicolson, Tracy Rector, Will Wilson' at Seattle Art Museum," <http://realchangenews.org/2018/07/25/first-thursday-guide-aug-2-2018>

Seattle Magazine, "Must List," June 14, 2018, <http://seattlemag.com/arts-and-culture/must-list-solstice-celebrations-seattle-international-dance-festival-double>

Seattle Metropolitan Magazine, "What to Do After Work," June 11-14, 2018, <https://www.seattlemet.com/articles/2018/6/11/what-to-do-after-work-june-11-14>

The Seattle Times, "Seattle Art Museum's 'Double Exposure' and the negative/positive legacy of photographer Edward S. Curtis," <https://www.seattletimes.com/entertainment/visual-arts/seattle-art-museums-double-exposure-and-the-negative-positive-legacy-of-photographer-edward-s-curtis/>

**"The museum knew it couldn't present a simple hagiography of Curtis' work without acknowledging its contradictions. "Double Exposure," [Brotherton] said, isn't so much about Curtis and Native artists responding to his work as it is about putting them on equal footing."** - The Seattle Times

Sotheby's Museum Network, Double Exposure: Edward S. Curtis, Marianne Nicolson, Tracy Rector, Will Wilson," <https://museumnetwork.sothebys.com/museum/seattle-art-museum/exhibition/double-exposure-edward-s-curtis-marianne-nicolson-tracy-rector-will-wilson>

The Stranger, "SAM Puts Edward Curtis's Native Portraits Next to Work by Contemporary Native Artists," <https://www.thestranger.com/visual-art/2018/07/04/28588823/sam-puts-edward-curtiss-native-portraits-next-to-work-by-contemporary-native-artists>

**"But you should see what SAM has done with Double Exposure. The jolts between Curtis's 'noble' (his word) Natives in traditional dress (their own or others') standing near the lively, light-filled, trickstery art of Wilson, Rector, Nicolson is just exhilarating."** - The Stranger

Tulalip News, "Major exhibition presents a Native-activated space, explores legacy of Edward S. Curtis," <http://www.tulalipnews.com/wp/2018/06/13/major-exhibition-presents-a-native-activated-space-explores-legacy-of-edward-s-curtis/>

Wall Street International Magazine, "Double Exposure," <https://wsimag.com/art/41342-double-exposure>