

Funds Distribution Report

Recipient Organization:
Seattle Art Museum

Address:
1300 First Avenue
Seattle, WA 98101

Contact:
(206) 654-3100
<https://www.seattleartmuseum.org>

Organization's General Goals:
The museum's mission is to connect art to life.

Date of Award: 2018 Q3
Level: \$2,501 to \$5,000

For more information, please read the attached report from Seattle Art Museum.

8802 27th Ave NE
Tulalip, WA 98271
TulalipCares.org

Disclaimer: This report may be a summary of content provided by the recipient, not always complete quoted material.

LIKE A JEFFREY HAMMER GIBSON



Grant Impact Report to the Tulalip Tribes

www.seattleartmuseum.org

Q3 2018 14.2

Seattle Art Museum
February 28, 2019—May 12, 2019

With The Tulalip Tribes' generous support, more than 60,000 visitors enjoyed *Jeffrey Gibson: Like a Hammer*. On view for three months at SAM, *Like a Hammer*, was the first major solo exhibition by New York-based artist Gibson, who has shown prominently in national and international exhibitions. The works featured mark a significant moment in Gibson's career when he began to consciously merge his contemporary artistic practice with his Native heritage (Choctaw-Cherokee).


Born in Colorado of Native parents, Gibson has lived in many world cities in the United States, Germany, Europe, and Korea, where his father's military career took him. Inspired by his global experiences, his elaborate multi-media works include text, weaving, beadwork, ceramics, and wood, and demonstrate his inventive interpretation of global modern art movements, Pop art, Native powwow culture, indigenous futurism, and civil rights references. In his most recent works, Gibson remixes modernist forms he employed previously, but now meshes them with a new visual vocabulary that explores his Indigenous identity. With nods to artists Sol Lewitt, Dan Flavin, Jean-Michel Basquiat and others, Gibson fabricates a modern history of Indigenous art that insinuates itself into the visual vocabulary of world art.

The 65 works in this exhibition were organized loosely around ideas or "moods" that characterize Gibson's ambitious output and creative shifts in the past five years. Each of the three organizing structures included his signature free-standing multi-media sculptures, beaded punching bags, woven wall hangings, fabric figures and abstract paintings.

Gibson frequently explores colonialism and the post-colonial mindset, reflecting on how Native experiences parallel other civil-rights movements. His work also revolves around universal themes of love, community, strength, vulnerability, and survival. Through videos featuring interviews with the artist and related programming, visitors were able to gain an enhanced understanding of Gibson's distinctive and complex creative practice, as well as how it has evolved from series to series.

We extend our deepest thanks to the Tulalip Tribes for supporting this presentation. If you have any questions or would like additional information, please contact Erika Nelsen, Institutional Giving Officer, at 206-332-1359 or erikan@seattleartmuseum.org.

Programs and Attendance

Overview Total exhibition attendance Days Open Average daily attendance K-12 school tours and/or workshops Public Events Group Tours Private Events (partners and rentals)	Visitors 60,517 74 817 2,093 8,533 307 3,788
Opening Events Member Preview Premier Members Reception Contributors Circles Reception Community Opening Celebration Educator Preview	800 500 250 600 180
	

Press Clippings

Jeffrey Gibson brings 'Like a Hammer' exhibit to SAM

Gibson's art is personal, brilliantly-hybridized, and seriously eye-catching

By Blake Peterson The Daily Mar 4, 2019 0 3 min to read

NEW SAM EXHIBITION EXPLORES INTERSECTIONALITY

Michaela Moore

Mar 7th, 2019 No Comments »

The Seattle Art Museum introduced Jeffrey Gibson's contemporary Like a Hammer exhibition this past week. Like a Hammer features beautiful beadwork and paintings done by Gibson, all in hopes to convey the message of Gibson's identity.

Artist Jeffrey Gibson Makes His Seattle Debut

Showing in Seattle for the first time, recently announced Whitney Biennial artist Jeffrey Gibson mixes traditional craft, pop culture, literature, and fashion in "Like a Hammer," his retrospective at SAM.

Jeffrey Gibson, a queer artist of Mississippi Choctaw and Cherokee heritage, has brought increased attention to contemporary Native American artists, using a mash-up approach to forge art that is personal and political. In his hands, indigenous craft methods, colorful abstraction and complex symbols fuse into iconic forms.

Artist Jeffrey Gibson mixes Indigenous heritage, pop culture and art therapy in SAM show



by Lisa Edge | March 13th, 2019

Selected Press Coverage A-Z

BOMB Magazine, *Innovation and Tradition: Jeffrey Gibson Interviewed by Emily Zimmerman*, <https://bombmagazine.org/articles/innovation-and-tradition-jeffrey-gibson-interviewed/>

"I needed to let go of whether I was an artist or not, and I needed to pursue the things that I want to see existing in the world that don't exist. What are the things that would leverage this world that didn't meet my expectations?"

Crosscut, *9 things to do in Seattle*, <https://crosscut.com/2018/10/9-things-do-seattle>

"Spanning five centuries, Peacock is an eye-popping look at a royal-family legacy. It uses video, audio and room-filling installations, along with dozens of fantastically detailed paintings (magnifying glasses are provided so you can study them closely), to immerse you in its world."—Crosscut

The Daily of the University of Washington, *Jeffrey Gibson brings 'Like a Hammer' exhibit to SAM*, http://www.dailyuw.com/arts_and_leisure/article_80bb499e-3e49-11e9-b023-fb65903ebc2f.html

"Personal, brilliantly hybridized, and seriously eye-catching." —Blake Peterson *The Daily*

The Eye, *Jeffrey Gibson at SAM*, <https://seattleeyeart.wordpress.com/2019/02/28/jeffrey-gibson-at-sam/>

"The artist has created a kind of gumbo of new associations, igniting things as disparate as old song lyrics and ab-ex white-boy modernism and indigenous craft with the most vital and urgent of sensations." —The Eye

Gray Magazine, *Artist Jeffrey Gibson Makes His Seattle Debut*, <https://graymag.com/2019/02/27/artist-jeffrey-gibson-makes-his-seattle-debut/>

King 5 New Day NW, *These artsy events are sure to make your week*, <https://www.king5.com/article/entertainment/television/programs/new-day-northwest/these-artsy-events-are-sure-to-make-your-week/281-57eacaaf-1e7e-4256-b92c-ba2976167bbf>

King 5 News Evening Magazine, *Seattle Magazine shares highlights from their spring arts preview*, <https://www.king5.com/article/entertainment/television/programs/evening/seattle-magazine-shares-highlights-from-their-spring-arts-preview/281-67aa06dd-43c1-4926-82ef-f2f4119a2e5a>

Parent Map, *Upcoming Family-Friendly Performances in the Greater Seattle Area*, <http://www.parentmap.com/article/upcoming-family-friendly-performances-greater-seattle-area>

"...sure to capture kids' imaginations. If your kids think art museums are like those shown in the movies — galleries full of dour portraits of medieval nobles — this is the exhibition to set them straight." —Gemma Alexander

Real Change News, *Artist Jeffrey Gibson mixes Indigenous heritage, pop culture and art therapy in SAM show*, <https://www.realchangenews.org/2019/03/13/artist-jeffrey-gibson-mixes-indigenous-heritage-pop-culture-and-art-therapy-sam-show>

Selected Press Coverage A-Z

Seattle's Child, *21 Free Things to Do with Kids around Seattle, Feb. 25 to Mar. 3*, <http://www.seattleschild.com/21-free-things-to-do-with-kids-around-Seattle-Feb-25-to-Mar-3/>

Seattle Magazine, *Seattle Community Calendar*, <https://www.seattletimes.com/entertainment/events/community-calendar-norwegian-cultural-and-heritage-day-holi-celebration-french-fest-washington-cask-beer-festival/>

Seattle Magazine, *At SAM, Jeffrey Gibson Pushes His Art Over the Borderline*, <https://www.seattlemag.com/arts-and-culture/sam-jeffrey-gibson-pushes-his-art-over-borderline>

"You may notice the exquisite, painstaking craftsmanship first, or you may notice that many of the bags now look like they're wearing skirts." —Gavin Borchert

Seattle Met, *Jeffrey Gibson: Like a Hammer Hits SAM Tonight*, <https://www.seattlemet.com/articles/2019/2/28/jeffrey-gibson-like-a-hammer-hits-sam-tonight>

"Like a Hammer has a manyness, a simultaneous quality that instead of diffusing into some fractured postmodern identity coheres into something singular." —Seattle Met

The Seattle Times, *Jeffrey Gibson's art, on view at SAM, knocks down boundaries with gentle taps and potent blows*, <https://www.seattletimes.com/entertainment/visual-arts/jeffrey-gibsons-art-on-view-at-sam-knocks-down-boundaries-with-gentle-taps-and-potent-blows/>

"Rather than offering an evolutionary tour of style, the exhibition exudes a feeling: a bold, fluid simultaneity, grounded in striking pattern, color and craftsmanship and provocative references to music, personal stories and indigenous practices." —Seattle Times

The Seattle Times, *Look Ahead: The hottest Seattle events for February 2019*, <https://www.seattletimes.com/entertainment/events/look-ahead-the-hottest-seattle-events-for-february-2019/>

The Seattle Times, *Seattle Community Calendar*, <https://www.seattletimes.com/entertainment/events/community-calendar-love-in-the-market-green-river-glass-show-northwest-flower-garden-festival/>

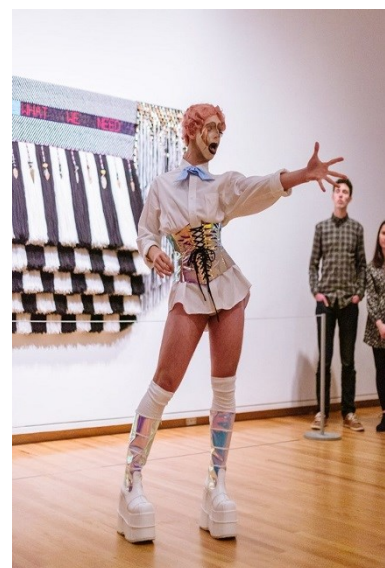
The Spectator, *New SAM Exhibit Explores Intersectionality*, <http://www.seattlespectator.com/2019/03/07/new-sam-exhibition-explores-intersectionality/>

The Stranger, *Your Complete Guide to February 2019 Events in Seattle*, <https://www.thestranger.com/things-to-do/2019/01/31/38419833/your-complete-guide-to-february-2019-events-in-seattle>

TeenTix, *Arts & Culture Guide Pick of the Week*, <https://mailchi.mp/teentix.org/artsandculture-75169>

teenTix Blog, *Like a Hammer: Commanding Presence and Claiming Identity With Bold Color, Pride, and Expression*, <https://www.teentix.org/blog/like-a-hammer-commanding-presence-and-claiming-identity-with-bold-color-pride-and-expression>

Photos



Photos

