



# Funds Distribution Report

---

**Recipient Organization:**  
**Sound Pathways**

**Address:**  
1721 Hewitt Ave, Ste 200  
Everett, WA 98201

**Contact:**  
(425) 259-7142  
<https://www.soundpathways.org>

**Organization's General Goals:**  
Sound Pathways serves as a beacon of hope and healing for at-risk individuals and families facing challenges related to alcohol, substance use, and mental health in Snohomish County.

---

<b>Date of Award:</b>	<b>Level:</b>
2021 Q4	\$7,501 to \$10,000

For more information, please read the attached report from Sound Pathways.

8802 27th Ave NE  
Tulalip, WA 98271  
**TulipCares.org**

Disclaimer: This report may be a summary of content provided by the recipient, not always complete quoted material.



# Sound Pathways

(Formerly Pacific Treatment Alternatives)

---

## Emergency Shelter to Educate and Empower Mothers (ESTEEM)

Tulalip Tribes Charitable Contribution  
Q4 2021 14.2

## Emergency Shelter to Empower and Educate Mothers (ESTEEM)

Sound Pathways (formerly Pacific Treatment Alternatives) manages the ESTEEM shelter for women in recovery and their children. ***In the past 7 months, January 1<sup>st</sup> – July 31<sup>st</sup>, 2022, the ESTEEM shelter has served 16 families, 16 mothers and 18 children*** with an increase of 1,161 bed nights made available for Households with children in Snohomish County this year alone. To date the ESTEEM shelter has housed 46 families since the program launched November 2019.

With the Tulalip Grant Award funding for the ESTEEM program, we have been able to help these families with the current housing deficit in Snohomish County while they focus on recovery and stability. ***The generosity of Tulalip Tribes has made it possible to fund up to 50% of the monthly program expenses January 2022 through April 2022.***

The ESTEEM shelter program property is in South Everett, close to daycares, on the bus line and other much needed resources for these families. Additionally, these women and children have a direct line to our main campus offices where they have access to their case manager, educational groups, women's resource center, interactive parenting courses, and support as they continue to grow in their recovery.

### Positive Outcomes

- 92% - Clients have completed an alcohol/drug treatment program
- 76% Clients have achieved at least one sustained (6-months or more) period of abstinence from drugs/alcohol
- 68% - Mothers are using family planning methods on a regular basis
- 80% - Children are living with their own families
- 56% - Mothers have attended or completed classes: GED, college, or work training

Other program successes include helping reunify numerous Mothers with their child(ren) while supporting long term stability and recovery while staying at the shelter.

Post COVID-19 pandemic has continued to pose funding challenges, but we are continuing to forge ahead in our efforts to find additional streams of funding to make this shelter a sustainable fixture and program in Snohomish County.

Thank you,  
**Debbie Graham**, LICSW (she/her/hers)  
Executive Director

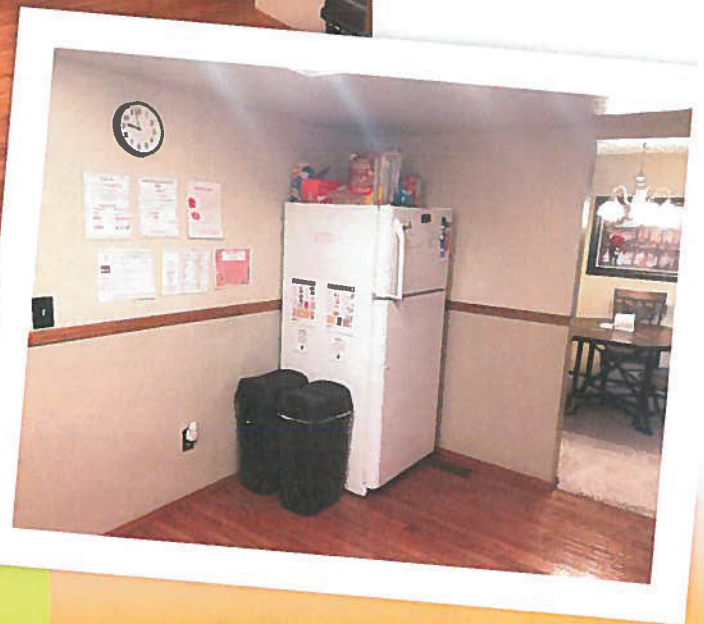


425-386-2606 | 1721 Hewitt Ave, Suite 200, Everett, WA 98201 | [soundpathways.org](https://www.soundpathways.org)



# ESTEEM for Women and Children

Emergency Shelter to Empower and Educate Mothers



## KITCHEN WITH TWO REFRIGERATORS

Each family has a designated shelf or cupboard space, space in a frig.

We also have house food available based on donations that we bring in from local food banks.

Communication Board of groups and activities, resources for recovery, chores, and house emergency information.

To donate and be a part of our mission go to  
[www.soundpathways.org/community-ways-to-give/](http://www.soundpathways.org/community-ways-to-give/)



## LIVING SPACE FOR COMMUNITY

Plenty of lounging places, reading nook and dining room for social time, house meetings and movie night.

Full catalog of family friendly movies and educational programs



ESTEEM can shelter up to 12 women or four families (four Moms with 1-3 children) up to 90 days until more permanent stable housing is obtained



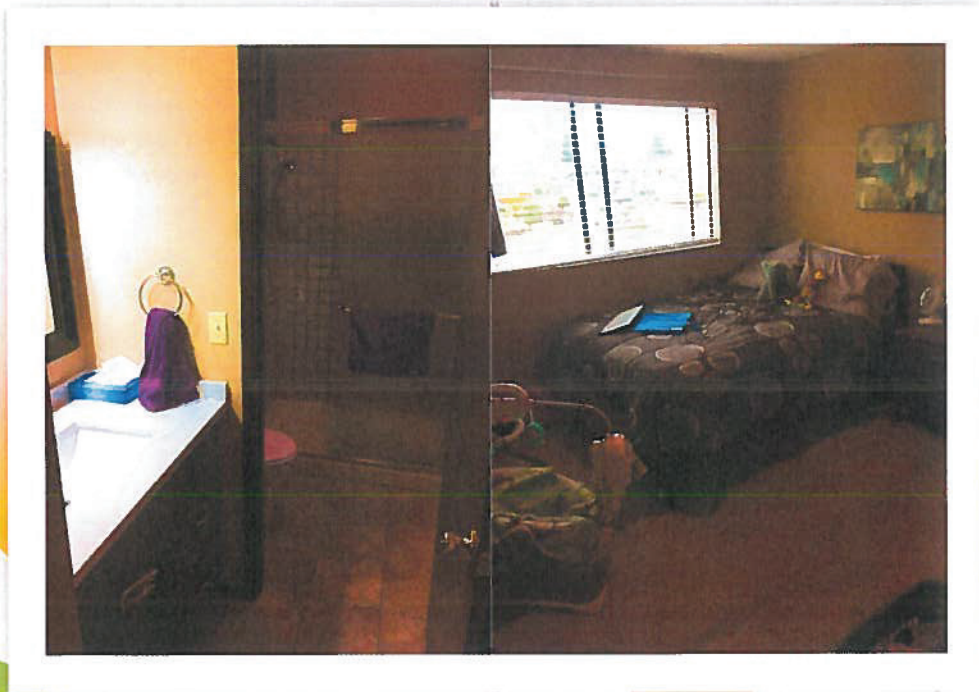
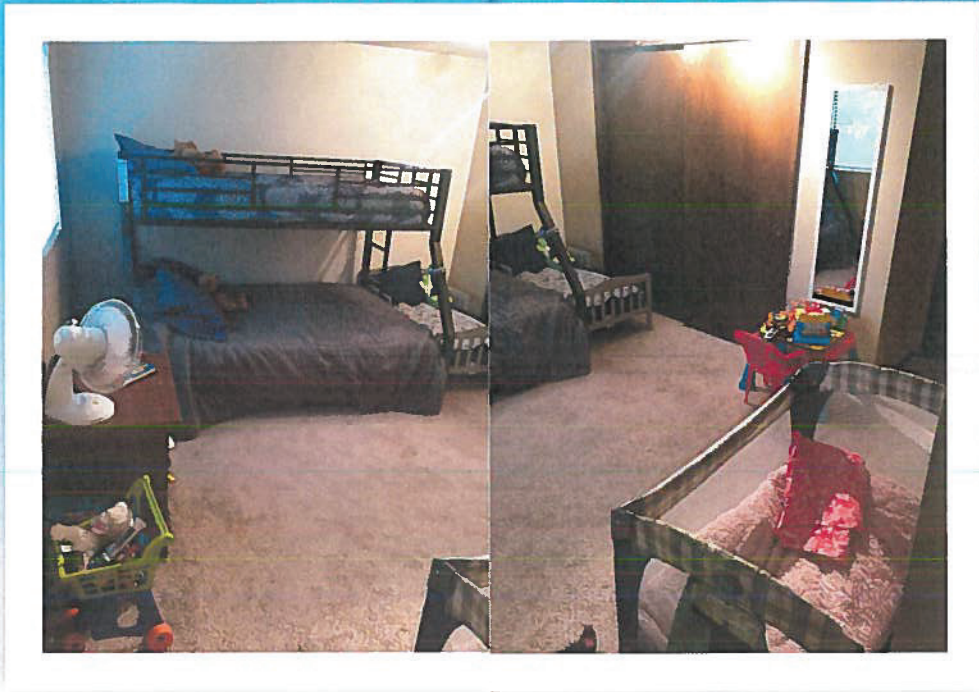
## BUSINESS CENTER, KIDS ZONE AND 4<sup>TH</sup> BEDROOM

Basement is a bonus room for kids play area with toys and activity table.

Business center area with WiFi and resource binder.

The larger space can be made into a bedroom to house an extra family. We move bed in and out based on need.





### UPSTAIRS BEDROOMS AND 3/4 BATH

Butterfly master bedroom can serve 2-3 single women or mother with 3-4 kids

Firefly bedroom can serve 1 single or pregnant mom or a mother with 1-2 kids



**UPSTAIRS BEDROOMS, FULL BATH & LAUNDRY ROOM  
WITH 1/2 BATH**

Ladybug bedroom can serve 1-2 single or pregnant women or a mother with 2-3 kids

Hall bathroom has full bath and sink area with plenty of storage and hall closets to share